

03 STANDARD BRACING CONDITIONS

3 Rafter diagonal bracing is nailed to the underside of the rafters at an angle of approximately 45 deg and runs from the ridge to the wallplate to which it is fixed. It must extend over the whole length of the roof with a minimum of 4 braces used. It may be omitted from no more than 2 trusses between braces and one truss at a gable or party wall.

Fig.11 Plan of rafter diagonal bracing wide fronted roof

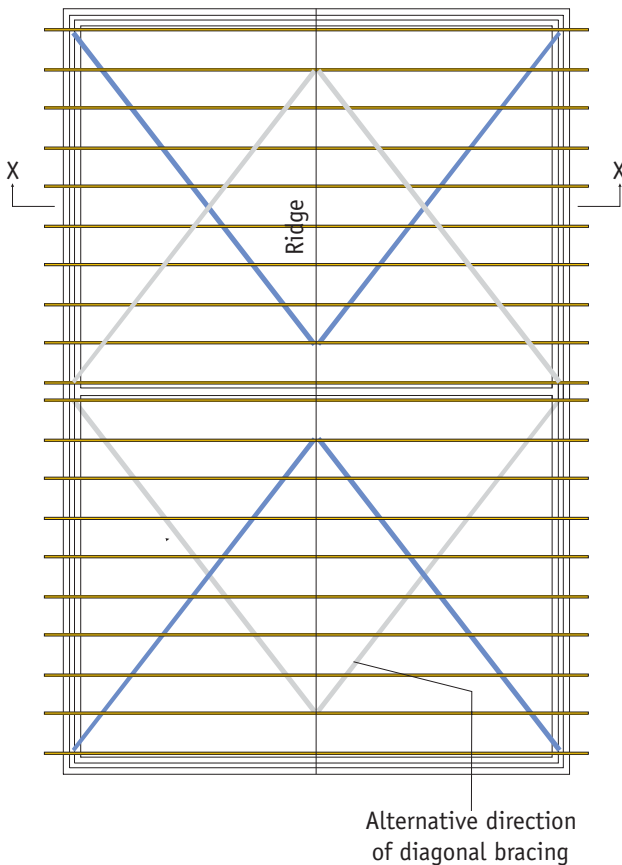


Fig.12 (Section X - X)

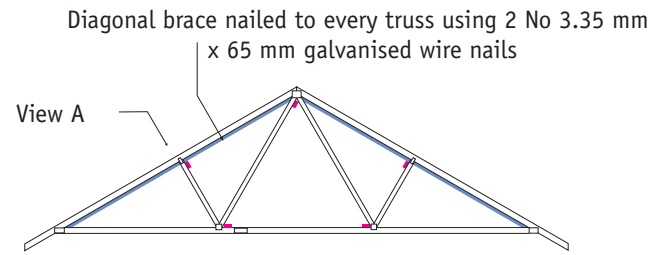


Fig.12a Part view on arrow A

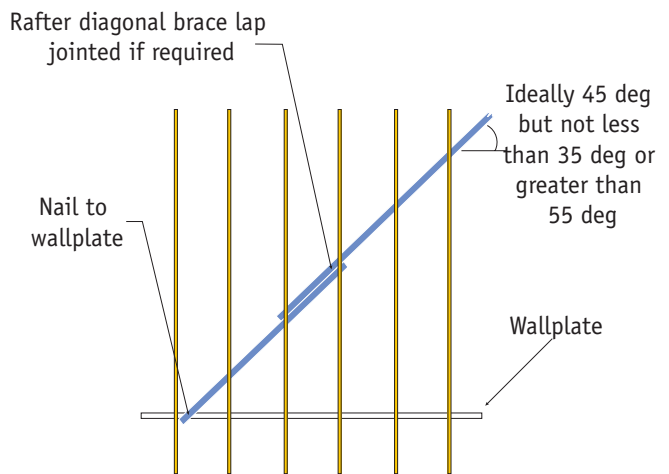


Fig.16 (Detail B)

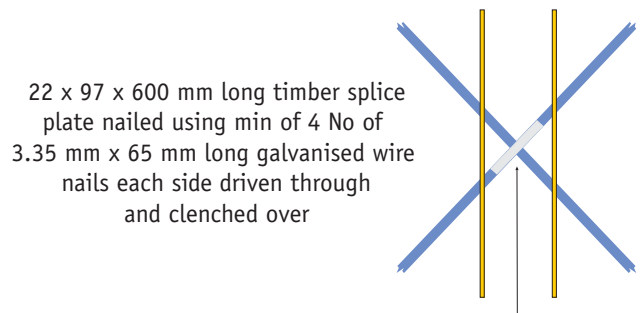


Fig.13

Plan of rafter diagonal bracing wide fronted roof

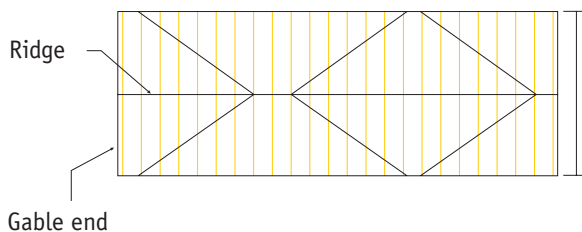


Fig.14

Plan of rafter diagonal bracing narrow fronted roof where frontage < span/1.4 (cos pitch)

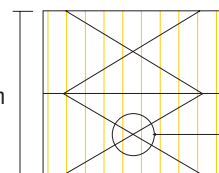


Fig.15

Plan of rafter diagonal bracing mono pitched roof

